

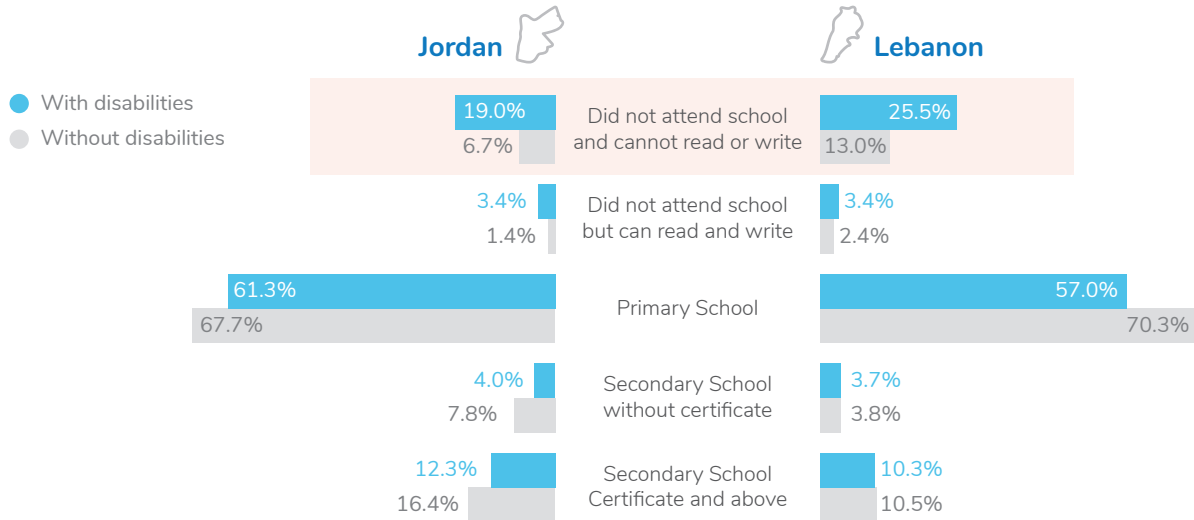


Factsheet 4 of 4 Education

Disability is defined as interactions between personal and environmental factors. It is measured by the level of functioning of a person in various areas of daily activities (called “domains”) regardless of impairments, using the Washington Group tools.

EDUCATION FOR PERSONS AGED 13+

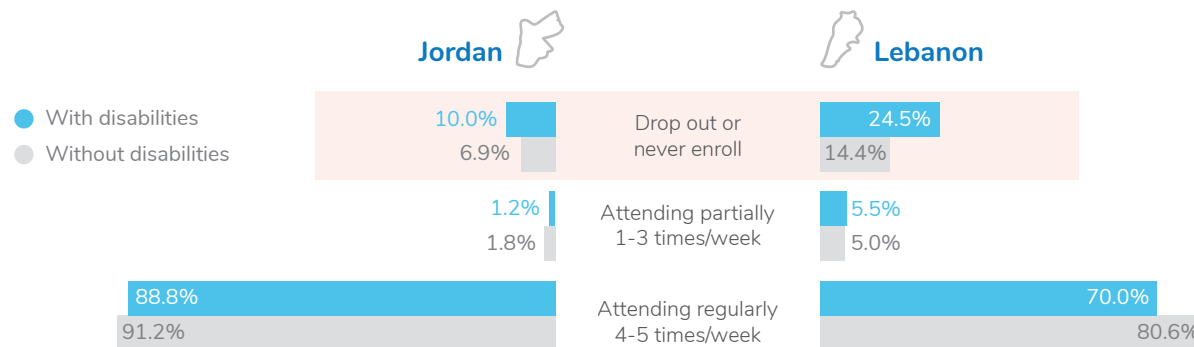
Highest level of education completed among persons 13 years and over



“
Persons with disabilities are more likely to never enroll and cannot read or write (p<0.05)
”

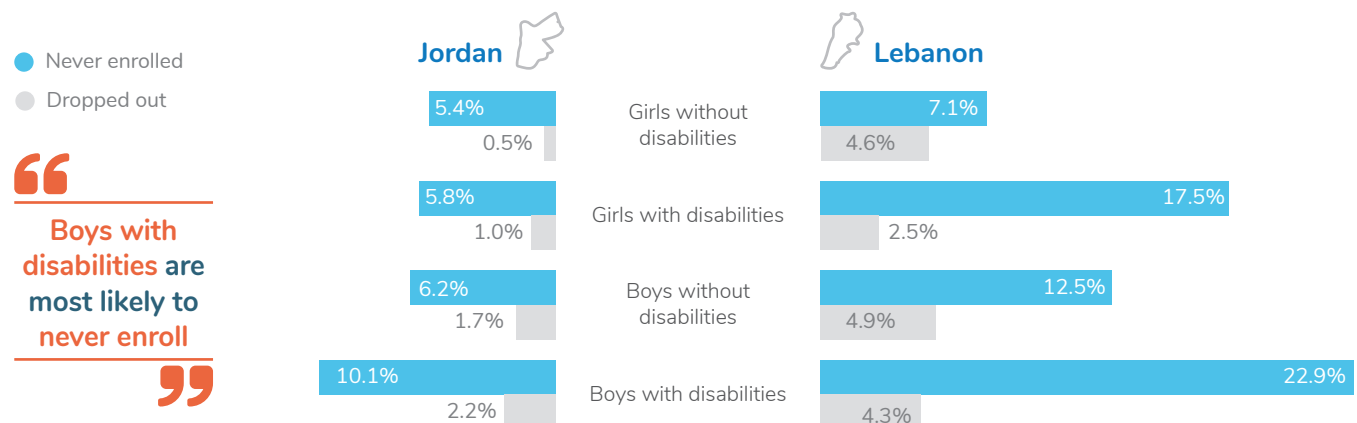
ENROLMENT STATUS OF CHILDREN AGED 6-12 YEARS

By disability



Disability and gender

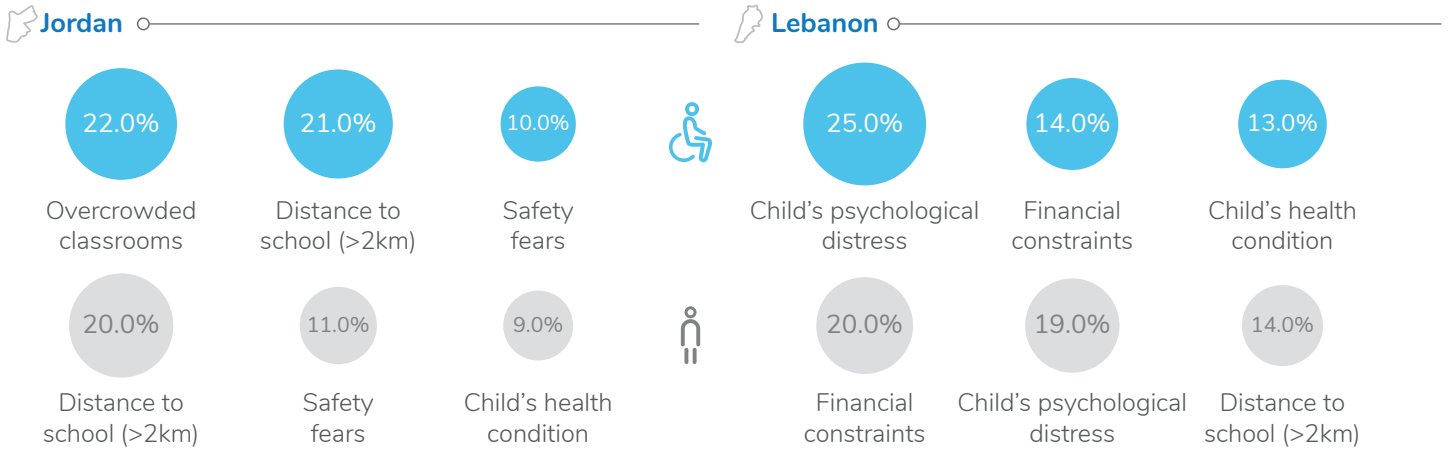
Rates of boys and girls who dropped out or never enrolled



“
Boys with disabilities are most likely to never enroll
”

ENROLMENT STATUS OF CHILDREN AGED 6-12 YEARS

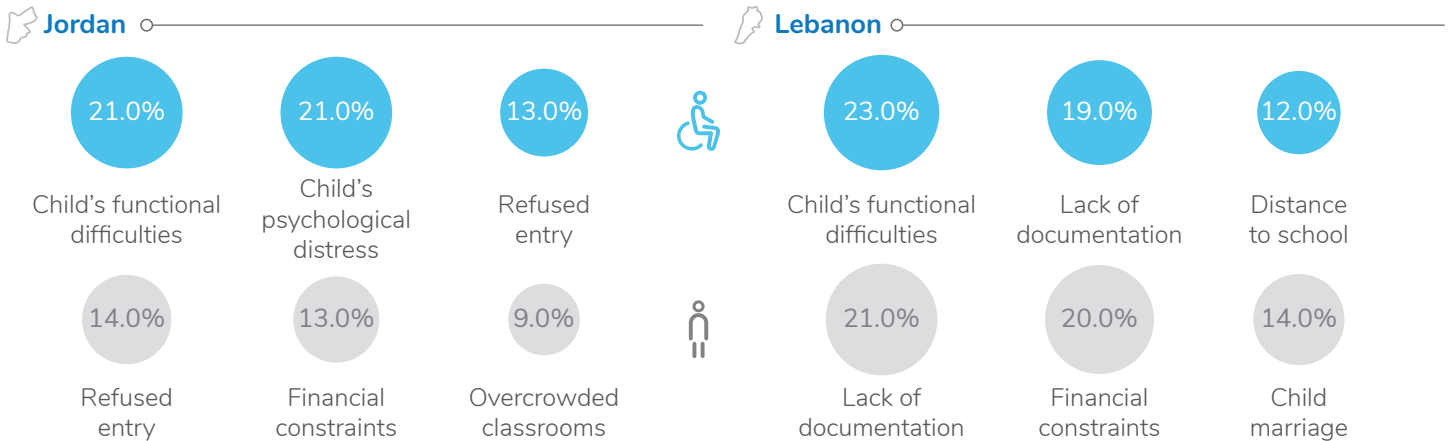
Barriers to education for children who are attending school



Priority solutions for children who are attending school to continue education



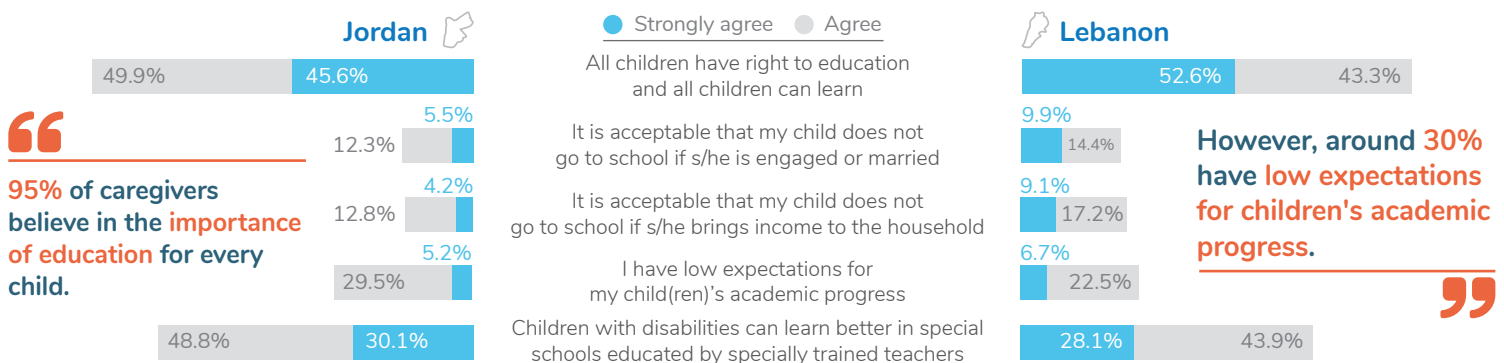
Barriers to education for children who dropped out or never enrolled



Priority solutions for children who dropped out or never enrolled to (re-)enroll school



CAREGIVERS' PERCEPTIONS ON INCLUSIVE EDUCATION



For further information



J.McGeown@hi.org



info@3is.org