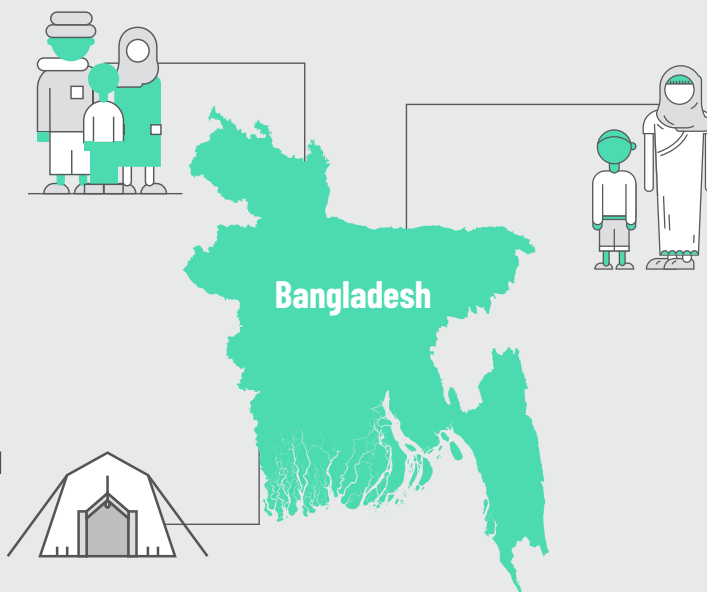


Implementation of WFP Assistance Program

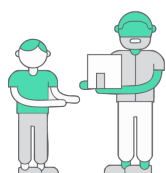
Rohingya refugees have been fleeing to Bangladesh from Rakhine State, Myanmar, where they suffer discrimination and targeted violence.

Since August 2017, **700,000 people arrived**, bringing the total number of Rohingya refugees in Cox's Bazar to nearly 920,000.



Over **80%** of the Rohingya refugees in Bangladesh are **women and children**, who are dependent upon humanitarian assistance to meet their basic food needs.

3iS in Cox's Bazar, Bangladesh



With the emergency operation in its second year, many WFP programme activities are in the process of modification, transition, or expansion. Reporting, visualization, and analysis are complicated by the use of activity-specific data collection and reporting tools. While those tools provide a picture of a single WFP programme activity at any one point in time, analysis of data from different WFP programme activities remains challenging, as does the identification of spatial patterns and trends over time.



In this context, 3iS works to solve these gaps and challenges in the information management systems in close coordination with WFP.

Project duration:
Since January 2019

Donor: **World Food Programme (WFP)**

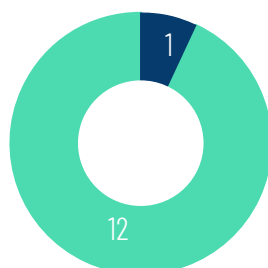
Current project:
Implementation of WFP Assistance Program

Project budget:
USD 801,805

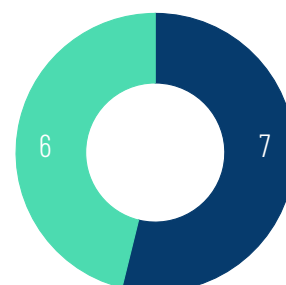
Partners 3iS supports:
World Food Programme Food Security Cluster

13
Number
of staff

■ Women
■ Men



■ National
■ International



Objectives

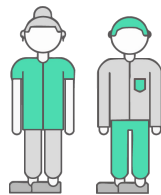


Implementing two changes in WFP's information management strategy:

To enable WFP to effectively manage ongoing and planned

modifications and transitions in programme activities, 3iS implemented two changes to the WFP information management strategy.

1. Implementing an **IMO Pool**, consisting of both international and national Information Management Officers (IMO, whose shared skills and time are allocated **to meet WFP**



requirements on a priority basis. The IMO Pool includes WFP contracted staff already in the Programme Unit, IMO's of WFP-led Sectors, and international and national consultants contracted by 3iS. The IMO Pool members are **professionals with a wide range of information management and analytical skills.** 3iS manages the IMO pool to ensure delivery of analytical products that **assist in the design, planning, implementation, and monitoring** of transitions in WFP Programme modalities, including the transition in General Food Distribution from In-Kind to e-Voucher, expansion of the DRR and SMEP Cash for Work Programs, and expansion of the EFSN Self-Reliance and Livelihood Support Programs in refugee camps and host communities.

2. Implementing **ReportHub**, an **integrated data management system**, to replace



the combination of local spreadsheets and WFP corporate databases/tools that are currently in use. ReportHub was designed by 3iS to support data collection and reporting in humanitarian operations.

By using ReportHub, WFP can manage data from multiple locations, distinguishing between refugees in camps, refugees in host communities, and Bangladeshis in host communities. ReportHub design allows WFP Programme Unit to retain control of its data and the process of approving the release of monthly reports to the Food Security Sector and ISCG. ReportHub does not duplicate WFP Corporate M&E data systems and it is compatible with WFP data visualization platforms (e.g Tableau). ReportHub includes native data visualization tools which can be customized by WFP partners to meet their operational needs.

Sectors supported:



Food Security