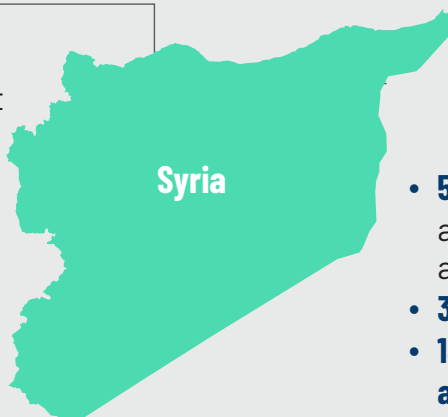


Urban Analysis Network Syria (UrbAN-S)



Syria is one of the world's most dire and **worst humanitarian emergencies**, characterized by **prolonged conflict** and exacerbated by the disjointed control of Syrian territories.

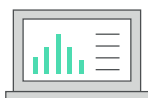


• **11.7 million** people in **need** of humanitarian assistance across Syria.

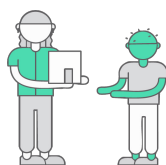
- **5 million** Syrians stationed inside Syria are in **acute need** of humanitarian assistance.
- **33%** of people in Syria are **food insecure**.
- **13.2 million** in Syria in need of **health assistance**.
- **83%** of Syrians live **below the poverty line**.

(Source: 2019 HNO)

Urban Analysis Network Syria



UrbAN-S brings a combination of expertise in urban analysis, information management, and collaborative and inclusive approaches to better understand information needs on the ground, to make information more relevant and more accessible, and to build the capacity of local partners to use that information.



The objective of UrbAN-S is framed within the global efforts to enhance responses in urban areas, including the Global Alliance for Urban Crises, and the Inter-Agency Standing Committee (IASC), which called for a paradigm shift in humanitarian assistance in urban areas to be community-based, rather than an individual beneficiary approach. This includes increased assistance support, filling gaps in existing institutions rather than establishing parallel systems, and strengthening linkages between humanitarian and development initiatives.

Years of presence in Syria:
1 year, 2018

Donor: **EU (DG-NEAR)**

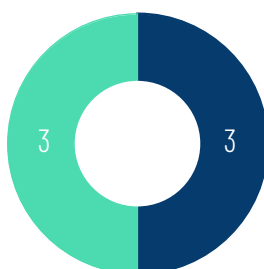
Current project: **Urban Analysis Network Syria (UrbAN-S)**

Project budget:
USD 3,391,575

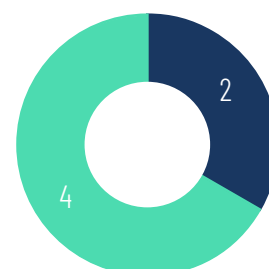
Number of partners 3iS currently supports: **4**

6
Number
of staff

■ Women
■ Men



■ National
■ International



Products



City Profiles: City Profiles are snapshots of the conditions in cities that have been affected by displacement and conflict. A comprehensive City Profile includes a)

displacement and population profiles; b) population needs and their level of access to services, compared to the functionality and performance of services; c) an analysis of the stakeholders, conflict dynamics and risks; and d) an analysis of the urban governance and policy environment. This information is collected through qualitative and quantitative data collection, and will be tailored to the specific needs and requirements of local, humanitarian and development actors in each of the selected urban areas. Because the Network tailors its information products, the City Profiles will adapt to specific contexts and demands. While the information will be structured under a holistic urban analysis framework, a dive-deep into sectoral Information and analysis will be provided as needed.



Damage Needs Assessment (DNA): Damage Needs Assessments (DNA) looks specifically at the level of functionality of services and

infrastructure in urban areas. The DNA combines remote sensing information based on satellite imagery for a rapid overview, with a deeper dive into the impact of this damage in the provision of services to the population in the short and long term.



Capacity Building: As part of the core set of interventions to support the partners to better analyse the urban context, the UrbAN-S partners plan to develop and provide training

for local partners coordinating data collection exercises, for building technical capacity in analysing data, and for facilitating joint analysis workshops. These capacity building initiatives will be opened to a wide array of stakeholders interested in enhancing their understanding of analysis in urban settings or those actors who are planning or are implementing City Profiles or DNAs.

63 staff trained



Urban Information Web Portal:

The web portal is where the collected and updated information will be stored in an interactive and spatial repository so that operational partners, local actors and donors can easily navigate through the spatial information, and download related snapshots and reports. The web portal will be used for a variety of purposes such as on-going monitoring reports, city dashboards, and to communicate the profiles of specific neighbourhoods where response is a priority. The Web Portal will also support other initiatives that inform programs for displaced Syrians both living inside and outside Syria.

Partners

UrbAN-S is a partnership of actors wishing to contribute in different capacities to high standard urban analysis for the Syria crisis to enable effective planning and response.

3iS: Lead coordinator of the UrbAN-S process, ensuring successful linkages and outreach with the wide array of Syria-focussed and global partners and stakeholders.

Joint IDP Profiling Service (JIPS): Leads the capacity-building by developing the framework for analysis collaboratively with partners and designing training material to fit local needs.

Mercy Corps/Humanitarian Access Team (HAT): The HAT team will be in charge of producing conflict analysis for each City Profile and will contribute to other products such as the framework for analysis.

European Commission - Joint Research Centre (JRC): Leads on the Damage Needs Assessments through satellite imagery and remote sensing analysis, and providing the spatial layers on land-uses.

Common Space Initiative (CSI): Brings senior Syrian urban management expertise, as well as support to conflict analysis.

UNHCR Camp Coordination Camp Management (CCCM)/IDP Situation Monitoring Initiative (IMSI)/Population Monitoring Initiative (PMI): Various UNHCR initiatives in Syria will act as complementary sources of information and profiling activities for the wider community to access.