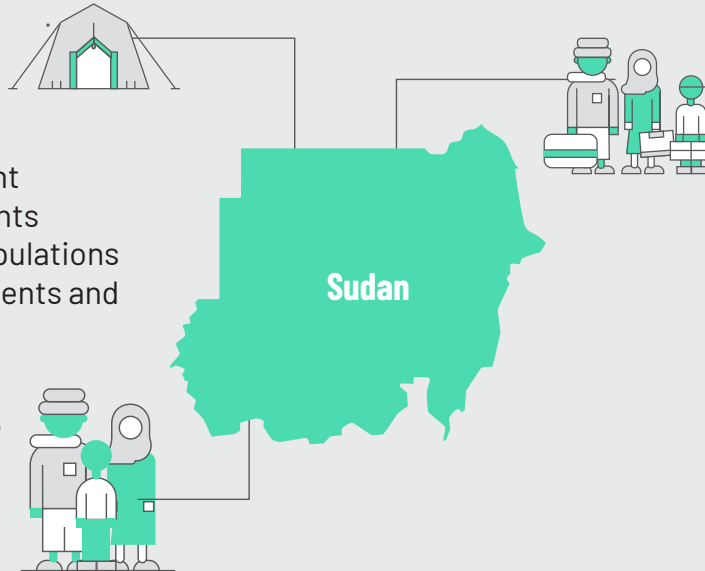


Profiling Coordinator Support to Resident Coordinator's Office in Sudan



The displacement context in Sudan is complex, as protracted displacement is mixed with new displacement as well as pendular movements of some of the displaced populations between the camps/settlements and places of origin.

Many Sudanese refugees are also returning from Chad, seeking to re-establish their lives in the country.



In addition, seasonal migration is part of the tradition of many of the communities, further complicating the analysis of the displacement and migration patterns.

3iS in Sudan



The Sudanese Government as well as the aid community have recognized the need to develop refined strategies to support durable solutions for the displaced, based on evidence on the profile of the displaced and displacement affected communities, as well as on an analysis of their preferred solutions.



Under the supervision of the Durable Solutions Working Group, with technical guidance from UN-Habitat, the project aims to integrate urban and village components into the Durable Solutions profiling exercise in order to obtain an evidence-based understanding to inform area-based and context-specific durable solutions planning and programming in Darfur, Sudan. The returnees mapping component aims to develop and standardize a tracking tool, produce static maps and develop a tool for sustainable mapping of the returnees.

Project duration:
Since June 2017

Donor: UNDP, World Bank

Current project: Urban Profiling and Returnees Mapping in Sudan

Project budget:
USD 287,331.58

Partners 3iS currently supports: UN-Habitat, JIPS

1
Information Management Specialist

Sectors Supported



Durable Solutions Working Group



Early Recovery Cluster

PREVIOUS PHASES:

Coordination of the Profiling exercise and Returnees mapping exercise:

In order to facilitate the development of a commonly agreed evidence base to inform the search for durable solutions for IDPs through a comparative analysis of different target groups (IDPs and the non-displaced host community) and the situations in which they are living, the Sudanese government, the UN, the World Bank and NGO partners have decided to undertake a joint area-based profiling exercise in 1/ Abu Shouk and Al Salam and the surrounding peri-urban/urban neighborhoods of El Fasher, and 2/ in areas of return and displacement in Um Dukhun locality, and any other locations that may be considered if feasible.

Deliverables



Urban profiling:

- Preliminary Urban Assessment report of El-Fasher Town, including a basic spatial, socioeconomic and demographic

profiling of El Fasher town.

- Participatory mapping exercises with local authorities and target population groups.
- Urban and village tools guidelines package to support urban and village profiling.
- Capacity building for the technical coordination platform (State Ministry of Physical Planning and Public Utilities) to promote planning strategies towards permanent housing standards.



Returnees Mapping:

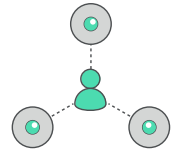
- Returnees dataset: development of a consolidated dataset including all data to map returnees.

- Returnees tracking matrix: the tracking matrix collects identified gaps in information for mapping returnees
- Six Returnees Static Maps (Darfur region and sub-states).
- Simple GIS tool (PowerBI): online tool, for mapping locations of the returnees and the basic humanitarian services available.

LAST AND CURRENT PHASE:

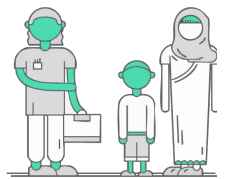
Coordination and facilitation of collaboration:

- Maintain an effective coordination of information management, collection and analysis of data (e.g. prepare coordination meetings, hold bilateral meetings and external briefing sessions).
- Liaise with all stakeholders to provide updates on data processes, and promote the use of data and analysis.
- Ensure the appropriate technical human resources, including those seconded from partner organizations, to support on all key steps of the profiling and analysis and potential future profiling exercises.



Support community consultation process:

- Support the Displacement and Solutions Strategic Advisor design and implementation of community consultations, including to share and validate profiling results and analyze and use the outcomes to complete analysis.



Data analysis and reporting:

- Develop a dissemination strategy for the final report amongst key stakeholders.
- Develop simple and effective methods to share information in an appropriate way (e.g. not all stakeholders have access to the same type of information systems), hard copies, verbal feedback at sector, and dissemination to displacement affected communities as part of accountability.

Technical guidance and strategic planning:

- Ensure learning from pilots feeds into future profiling exercises and that relevant best practices internally and externally both nationally and globally are utilized.
- Ensure the profiling findings feed into the Durable Solutions Plan of Action for El Fasher.
- Support the national government/authorities in exploring the relevance and added benefit of undertaking profiling to support durable solutions planning and strategy.

